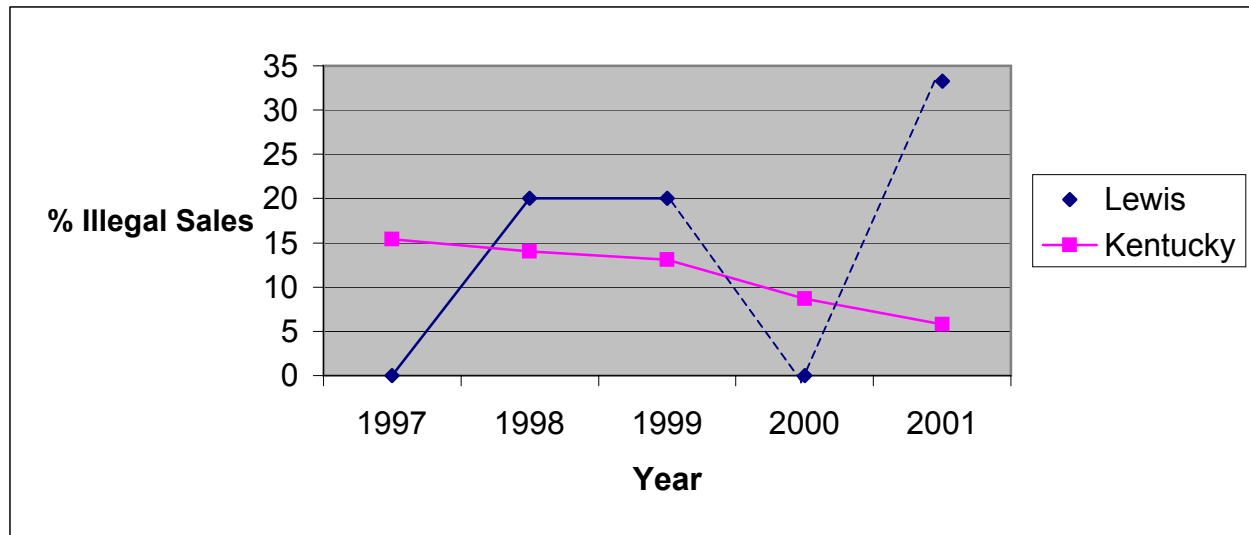


**Illegal Tobacco Sales to Minors  
by Health Department Service Area and State  
1997-2001**

**Lewis County Health Department**

| Service Area | 1997                 |               |      | 1998                 |               |      | 1999                 |               |      | 2000                 |               |     | 2001                 |               |      |
|--------------|----------------------|---------------|------|----------------------|---------------|------|----------------------|---------------|------|----------------------|---------------|-----|----------------------|---------------|------|
|              | Attempts to Purchase | Illegal Sales | %    | Attempts to Purchase | Illegal Sales | %    | Attempts to Purchase | Illegal Sales | %    | Attempts to Purchase | Illegal Sales | %   | Attempts to Purchase | Illegal Sales | %    |
| Lewis        | 11                   | 0             | 0.0  | 20                   | 4             | 20.0 | 20                   | 4             | 20.0 | 0                    | *             | *   | 9                    | 3             | 33.3 |
| Kentucky     | 2061                 | 318           | 15.4 | 2633                 | 369           | 14.0 | 5853                 | 768           | 13.1 | 3361                 | 293           | 8.7 | 3446                 | 199           | 5.8  |



\* No data reported  
----- = Missing Data

Source: Alcoholic Beverage Control, Teen Tobacco Enforcement Program

*This report was prepared through a contract between the Kentucky Cabinet for Health Services and the University of Kentucky*