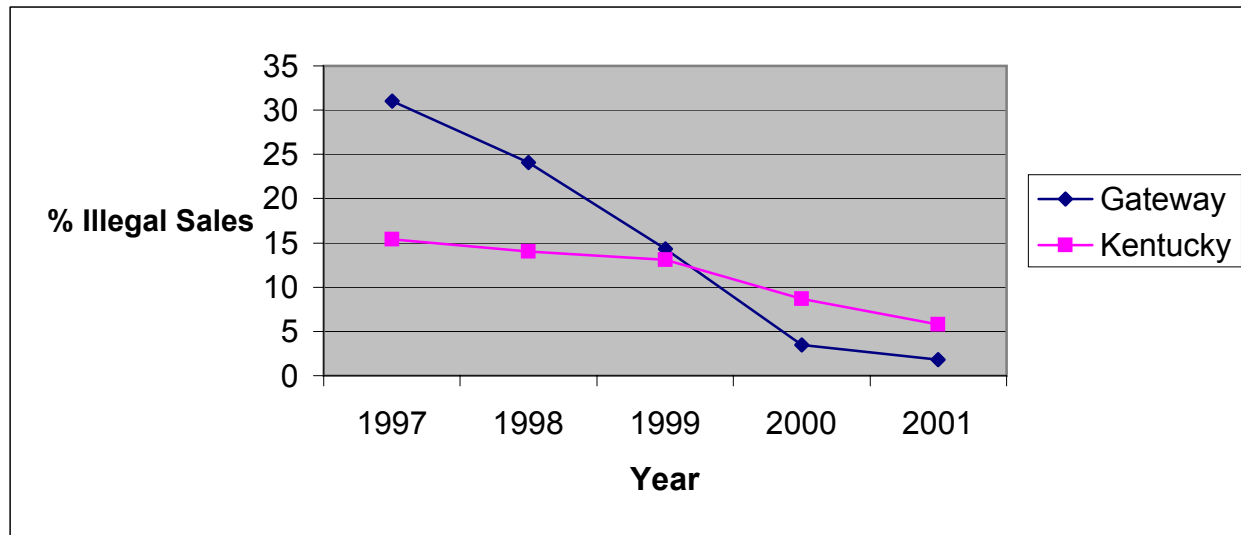


**Illegal Tobacco Sales to Minors
by Health Department Service Area and State
1997-2001**

Gateway District Health Department

Service Area	1997			1998			1999			2000			2001		
	Attempts to Purchase	Illegal Sales	%	Attempts to Purchase	Illegal Sales	%	Attempts to Purchase	Illegal Sales	%	Attempts to Purchase	Illegal Sales	%	Attempts to Purchase	Illegal Sales	%
Bath	0	*	*	9	3	33.3	31	3	9.7	45	3	6.7	46	2	4.3
Menifee	7	3	42.9	4	0	0.0	9	1	11.1	7	1	14.3	6	0	0.0
Morgan	0	*	*	5	1	20.0	24	3	12.5	1	0	0.0	11	0	0.0
Rowan	22	6	27.3	40	10	25.0	69	12	17.4	61	0	0.0	49	0	0.0
Gateway	29	9	31.0	58	14	24.1	133	19	14.3	114	4	3.5	112	2	1.8
Kentucky	2061	318	15.4	2633	369	14.0	5853	768	13.1	3361	293	8.7	3446	199	5.8



* No data reported

Source: Alcoholic Beverage Control, Teen Tobacco Enforcement Program