



LCME Re-accreditation Process

College of Medicine Planning

LCME Re-accreditation Process

- Every 8 years: UK scheduled in the fall of 2010
- Collect data: September-November 2009
- Institutional Self-study: August 2009-April 2010
- Prepare database: April-July 2010
- Submit Self-study summary & database: July 2010
- LCME site visit: September 2010
- LCME decision: February 2011
 - Desired Outcome: re-accreditation – no citation
 - Undesired Outcome: limited site visit, probation or withdrawal of accreditation

ED-33 (15/53) Curriculum Mgmt.

- There must be integrated institutional responsibility for the overall design, management, and evaluation of a coherent and coordinated curriculum.
- The phrase "integrated institutional responsibility" implies that an institutional body (commonly a curriculum committee) will oversee the educational program as a whole.
- An effective central curriculum authority will exhibit:
 - Faculty, student, and administrative participation.
 - Expertise in curricular design, pedagogy, and evaluation methods.
 - Empowerment, through bylaws or decanal mandate, to work in the best interests of the institution without regard for parochial or political influences, or departmental pressures.

RULES OF THE FACULTY OF THE COLLEGE OF MEDICINE

- **3.4 Committees of the Faculty:**
- The College will be served by committees which are established to expedite the work of the faculty. Each year the Faculty Council will nominate, and the Dean will appoint, committee members representing the clinical faculty, the basic science faculty, post-graduate trainees and the medical student body. Each committee will also include one of the Faculty Council members who will serve in an ex-officio, non-voting capacity and be the liaison between the standing committees and the Faculty Council as the integrating body. In this spirit, each Committee is encouraged to exchange ideas with the Faculty Council as the issues dealing with their respective charges are being considered.
- The Standing Committees of the Faculty are: the Admissions Committee, Curriculum Committee and the Student Progress and Promotions Committee.

- **3.4I The Curriculum Committee**
- a. Charge: The Committee will serve as an advisory body to the Faculty Council and:
 - 1. review and evaluate the global objectives of all medical educational programs of the College;
 - 2. determine whether educational goals of the College are being met and recommend means by which deficiencies should be corrected;
 - 3. recommend significant changes in schedules and content of the curriculum, recommend incorporation of innovative teaching methods and improve either vertical or horizontal integration of the curriculum;

4. review proposals for changes in content, emphasis and approximate time allotment for each course offered. To facilitate this activity, each **Department Chair, in consultation with their** Course Directors shall submit as part of the curriculum quality assurance program an annual written report to the Curriculum Committee in which the educational operating procedures for each of the **department's** courses are reviewed and in which changes are proposed. **Based upon a review of the collective reports, the Committee will produce an annual quality assurance report and recommend curriculum changes to the Faculty Council who will study the recommendation(s) and assess strengths and weaknesses.** If the Council approves the recommendations as submitted, **the Council will notify the Dean and request that the curriculum changes be implemented. The Faculty Council's ex-officio representative to the Curriculum Committee has the discretion to approve on behalf of the Faculty Council course changes or submission he/she deems to be minor changes. The ex-officio member should refer major changes to the entire Faculty Council for discussion and approval. Routine matters related to course administration will be coordinated by the Office of Academic Affairs by interaction with appropriate Course Directors. When a recommendation is not approved, the Council will notify the Curriculum Committee of the basis for the decision and may make suggestions for strengthening the Curriculum Committee's recommendation.**

5. Review the curriculum as a whole on a periodic basis

6. 5. examine the teaching methods and student learning environment and determine whether they are appropriate to meet the educational goals of the College;

7. 6. consider whether resources to achieve the educational mission and objectives of the College are adequate and make recommendations for corrective measures;

8. 7. as needed, recommend changes in the criteria to be used for student admissions.

b. Membership:

The Curriculum Committee shall be composed of three basic science faculty, four clinical science faculty, one community-based faculty, a medical student representative from each class, the Associate Dean for Academic Affairs, and the Assistant Dean for Curriculum (as an ex officio member). The Chair will be the Associate Dean for Academic Affairs.

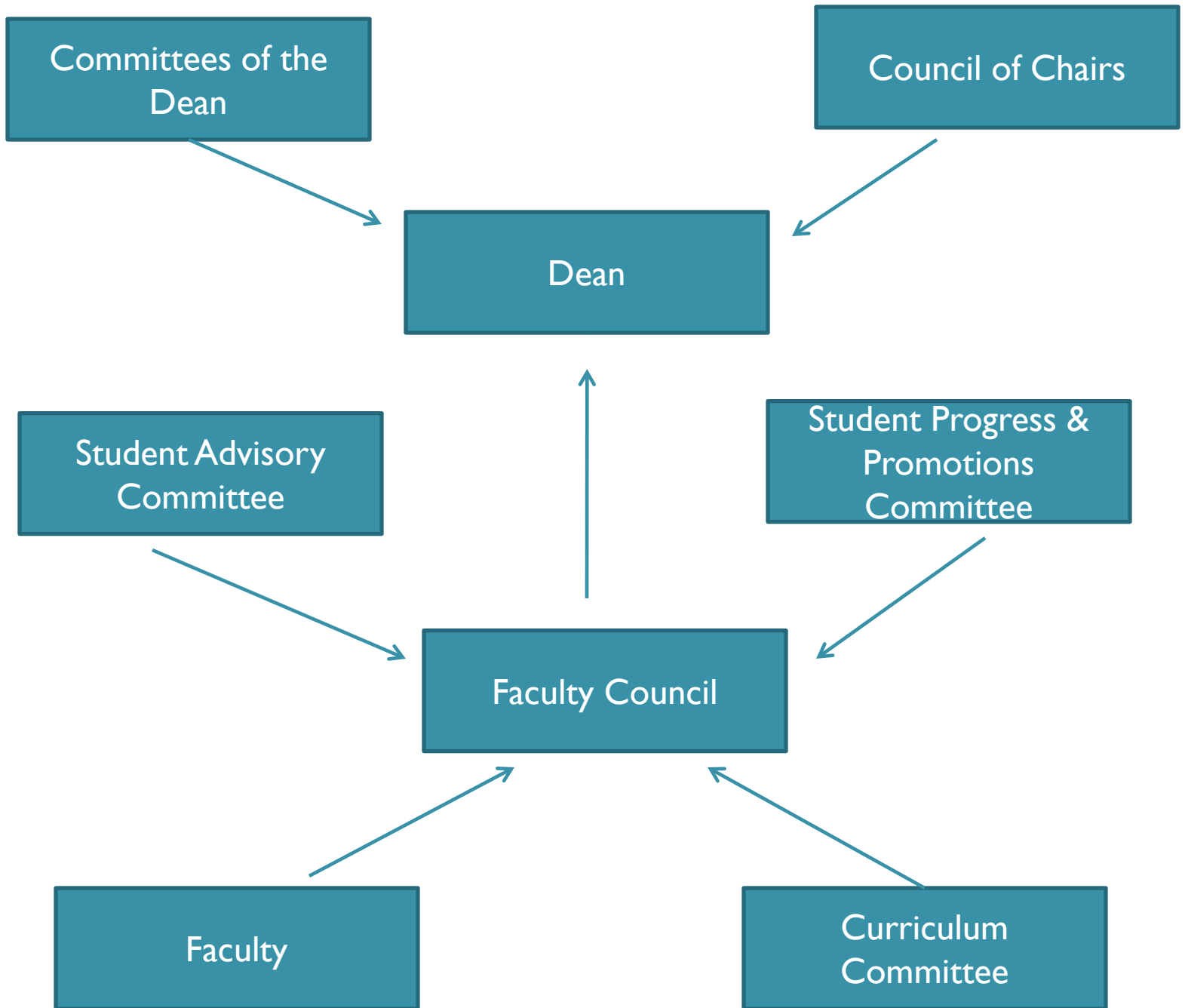
1. Faculty members will be recommended by the Faculty Council and appointed by the Dean after consultation with the appropriate Departmental Chair and Associate Deans.

2. Faculty members will be identified on the basis of their broad, educational perspective and their ability to view the curriculum as an integrated program. Terms of office shall be three years and in order to insure a continuum of activity and ideas, the membership terms will be staggered.

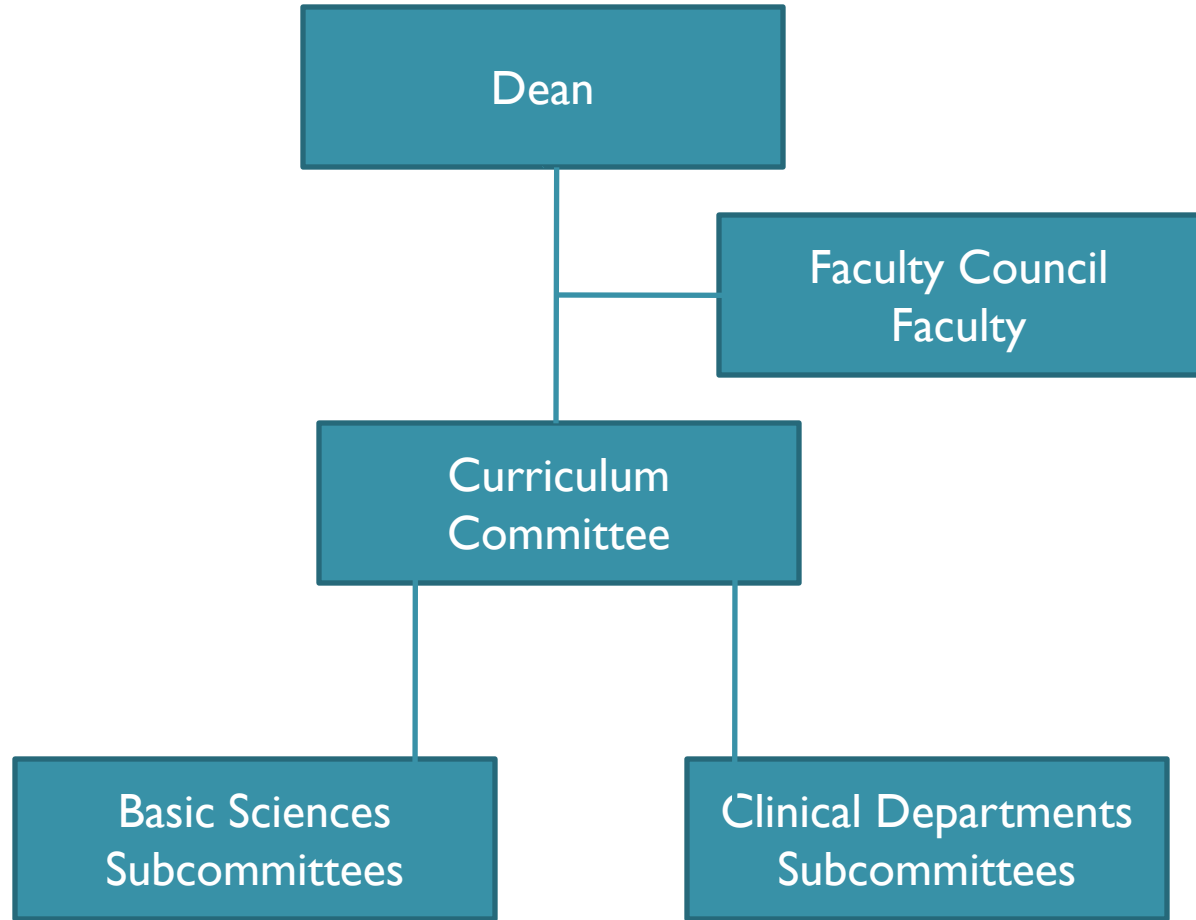
3. The student members are selected by their class. The junior and senior class representatives shall serve as voting members with one vote delegated to the senior if present or the junior class representative if the senior class representative is absent.

4. Standing subcommittees shall consist of the course directors of the various courses of the curriculum. The subcommittees shall be organized as deemed most appropriate and shall report to the Curriculum Committee and advise it.

Current Committee Structure



Proposed Committee Structure



Dean

```
graph TD; Dean[Dean] --- DC[Dean's Committees]; Dean --- FC[Faculty Committees];
```

- **Dean's Committees**

- Clinical Performance Examination Committee
- Committee on Faculty Appointments, Appeals, Promotion & Tenure
- Committee on Medical Liaison & Continuing Education
- Council of Chairs
- Curriculum Committee
- Dean's Advisory Council
- Diversity Committee
- Financial Aid committee
- International Committee
- Interprofessional Education & Practice
- Postdoctoral Advisory Committee
- Research Affairs Advisory Group
- Research & Graduate Education Committee
- Senior Administrative Group
- Student Advisory Council

- **Faculty Committees**

- **Faculty Council**
- Admissions
- Student Progress & Promotion



Please feel free to share your ideas and thoughts with the LCME Planning Group.

Submit via e-mail to:

Lana Dearinger ldearing@email.uky.edu

Linda Asher lmashe2@email.uky.edu

Darrell Jennings cdjenn@uky.edu

David Watt dwatt@uky.edu

Emery Wilson ewilson@uky.edu