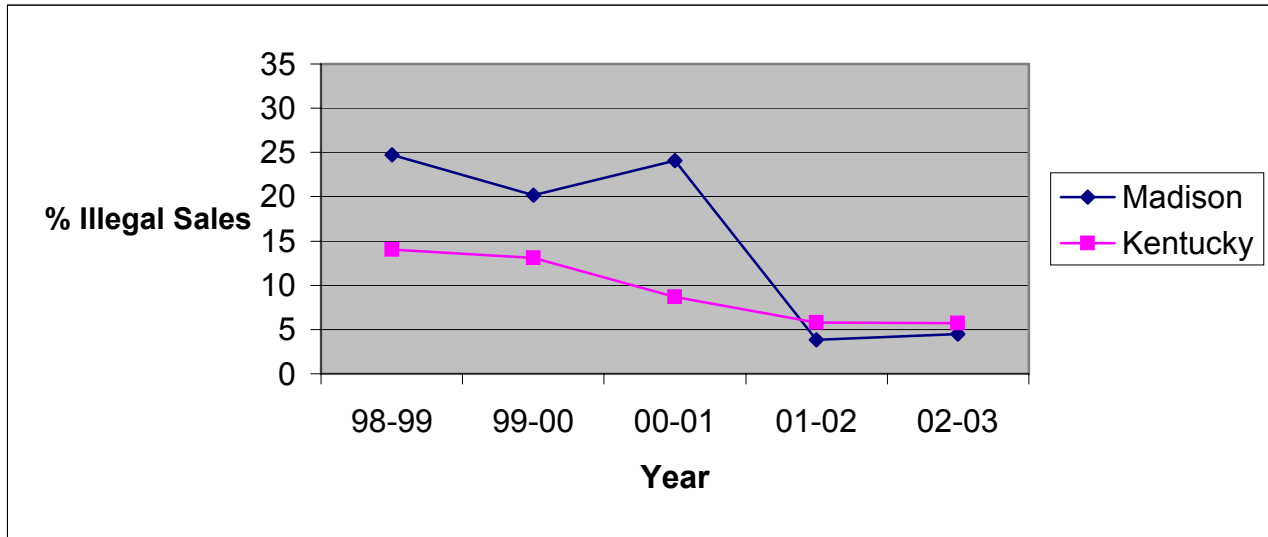


**Illegal Tobacco Sales to Minors
by Health Department Service Area and State
1998-2003**

Madison County Health Department

Service Area	1998-99			1999-00			2000-01			2001-02			2002-03		
	Attempts to Purchase	Illegal Sales	%	Attempts to Purchase	Illegal Sales	%	Attempts to Purchase	Illegal Sales	%	Attempts to Purchase	Illegal Sales	%	Attempts to Purchase	Illegal Sales	%
Madison	73	18	24.7	188	38	20.2	58	14	24.1	53	2	3.8	89	4	4.5
Kentucky	2633	369	14.0	5853	768	13.1	3361	293	8.7	3446	199	5.8	3117	177	5.7



Source: Alcoholic Beverage Control, Teen Tobacco Enforcement Program

This report was prepared through a contract between the Kentucky Cabinet for Health Services and the University of Kentucky College of Nursing.