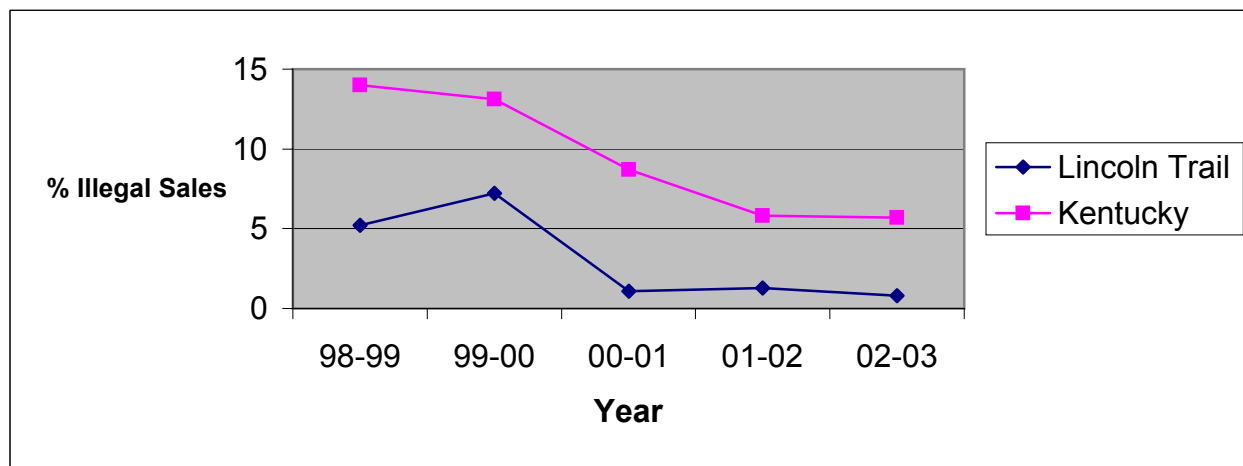


**Illegal Tobacco Sales to Minors  
by Health Department Service Area and State  
1998-2003**

**Lincoln Trail District Health Department**

Service Area	1998-99			1999-00			2000-01			2001-02			2002-03		
	Attempts to Purchase	Illegal Sales	%	Attempts to Purchase	Illegal Sales	%	Attempts to Purchase	Illegal Sales	%	Attempts to Purchase	Illegal Sales	%	Attempts to Purchase	Illegal Sales	%
Grayson	0	*	*	20	3	15.0	0	*	*	0	*	*	10	0	0.0
Hardin	82	1	1.2	124	6	4.8	111	1	0.9	68	2	2.9	41	1	2.4
Larue	12	2	16.7	12	3	25.0	10	0	0.0	10	0	0.0	3	0	0.0
Marion	11	1	9.1	28	4	14.3	18	1	5.6	23	0	0.0	22	0	0.0
Meade	0	*	*	26	0	0.0	33	0	0.0	18	0	0.0	9	0	0.0
Nelson	20	0	0.0	58	0	0.0	10	0	0.0	17	0	0.0	40	0	0.0
Washington	28	4	14.3	38	6	15.8	3	0	0.0	18	0	0.0	8	0	0.0
<b>Lincoln Trail</b>	<b>153</b>	<b>8</b>	<b>5.2</b>	<b>306</b>	<b>22</b>	<b>7.2</b>	<b>185</b>	<b>2</b>	<b>1.1</b>	<b>154</b>	<b>2</b>	<b>1.3</b>	<b>133</b>	<b>1</b>	<b>0.8</b>
<b>Kentucky</b>	<b>2633</b>	<b>369</b>	<b>14.0</b>	<b>5853</b>	<b>768</b>	<b>13.1</b>	<b>3361</b>	<b>293</b>	<b>8.7</b>	<b>3446</b>	<b>199</b>	<b>5.8</b>	<b>3117</b>	<b>177</b>	<b>5.7</b>



Source: Alcoholic Beverage Control, Teen Tobacco Enforcement Program

*This report was prepared through a contract between the Kentucky Cabinet for Health Services and the University of Kentucky College of Nursing.*

\* No data reported