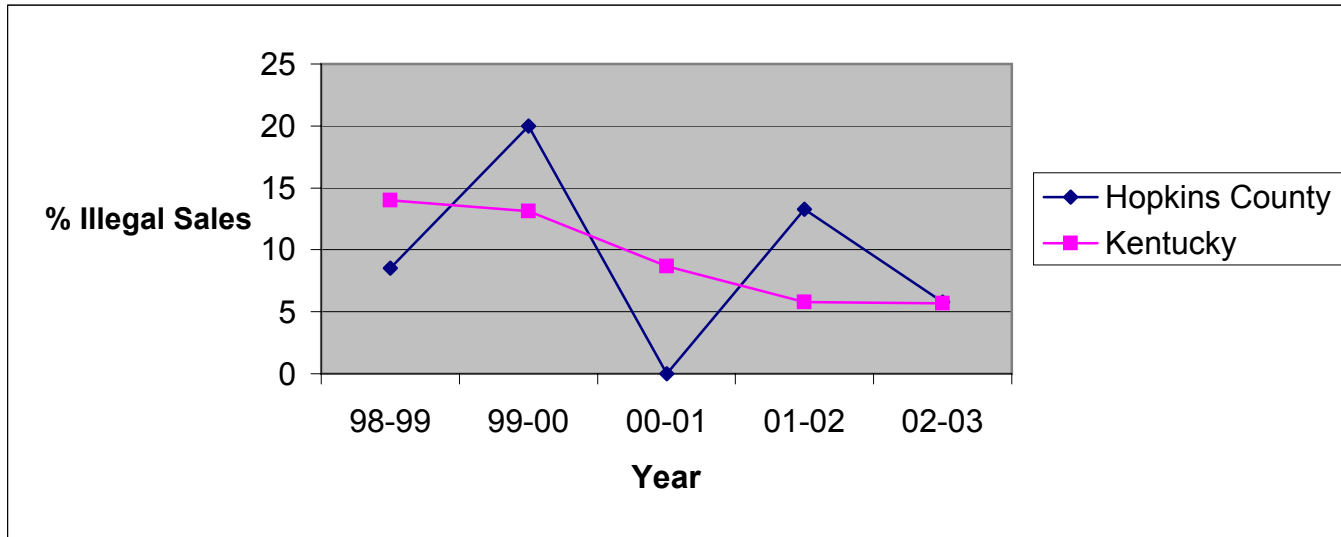


**Illegal Tobacco Sales to Minors
by Health Department Service Area and State
1998-2003**

Hopkins County Health Department

Service Area	1998-99			1999-00			2000-01			2001-02			2002-03		
	Attempts to Purchase	Illegal Sales	%	Attempts to Purchase	Illegal Sales	%	Attempts to Purchase	Illegal Sales	%	Attempts to Purchase	Illegal Sales	%	Attempts to Purchase	Illegal Sales	%
Hopkins	47	4	8.5	115	23	20.0	26	0	0.0	30	4	13.3	69	4	5.8
Kentucky	2633	369	14.0	5853	768	13.1	3361	293	8.7	3446	199	5.8	3117	177	5.7



Source: Alcoholic Beverage Control, Teen Tobacco Enforcement Program

This report was prepared through a contract between the Kentucky Cabinet for Health Services and the University of Kentucky College of Nursing.