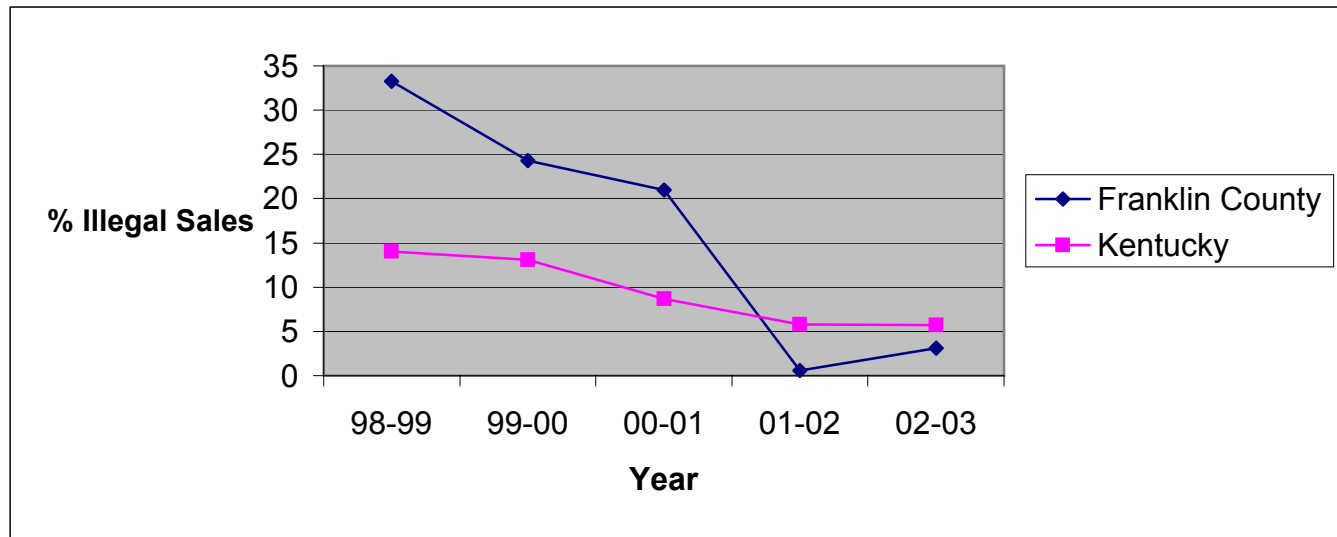


**Illegal Tobacco Sales to Minors  
by Health Department Service Area and State  
1998-2003**

**Franklin County Health Department**

| Service Area | 1998-99              |               |      | 1999-00              |               |      | 2000-01              |               |      | 2001-02              |               |     | 2002-03              |               |     |
|--------------|----------------------|---------------|------|----------------------|---------------|------|----------------------|---------------|------|----------------------|---------------|-----|----------------------|---------------|-----|
|              | Attempts to Purchase | Illegal Sales | %    | Attempts to Purchase | Illegal Sales | %    | Attempts to Purchase | Illegal Sales | %    | Attempts to Purchase | Illegal Sales | %   | Attempts to Purchase | Illegal Sales | %   |
| Franklin     | 27                   | 9             | 33.3 | 37                   | 9             | 24.3 | 62                   | 13            | 21.0 | 157                  | 1             | 0.6 | 96                   | 3             | 3.1 |
| Kentucky     | 2633                 | 369           | 14.0 | 5853                 | 768           | 13.1 | 3361                 | 293           | 8.7  | 3446                 | 199           | 5.8 | 3117                 | 177           | 5.7 |



Source: Alcoholic Beverage Control, Teen Tobacco Enforcement Program

*This report was prepared through a contract between the Kentucky Cabinet for Health Services and the University of Kentucky College of Nursing.*