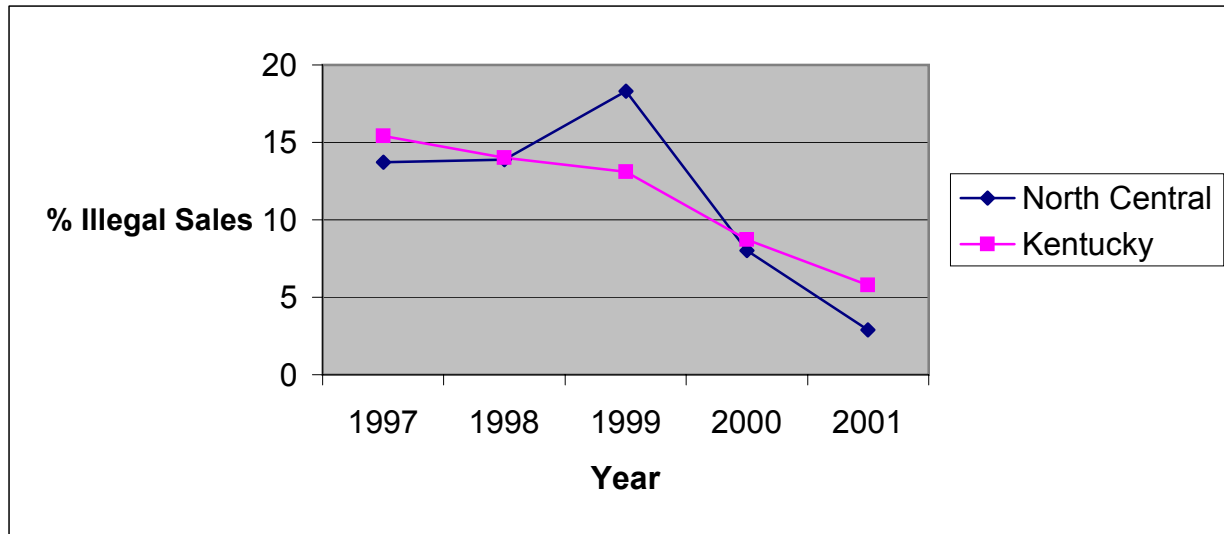


**Illegal Tobacco Sales to Minors  
by Health Department Service Area and State  
1997-2000**

**North Central District Health Department**

Service Area	1997			1998			1999			2000			2001		
	Attempts to Purchase	Illegal Sales	%	Attempts to Purchase	Illegal Sales	%	Attempts to Purchase	Illegal Sales	%	Attempts to Purchase	Illegal Sales	%	Attempts to Purchase	Illegal Sales	%
Henry	6	0	0.0	22	3	13.6	22	5	22.7	19	1	5.3	30	0	0.0
Shelby	21	4	19.0	12	2	16.7	37	3	8.1	46	2	4.4	39	0	0.0
Spencer	15	3	20.0	2	0	0.0	6	2	33.3	13	4	30.8	15	0	0.0
Trimble	9	0	0.0	0	*	*	6	3	50.0	10	0	0.0	20	3	15.0
North Central	51	7	13.7	36	5	13.9	71	13	18.3	88	7	8.0	104	3	2.9
Kentucky	2061	318	15.4	2633	369	14.0	5853	768	13.1	3361	293	8.7	3446	199	5.8



\* No data reported

Source: Alcoholic Beverage Control, Teen Tobacco Enforcement Program