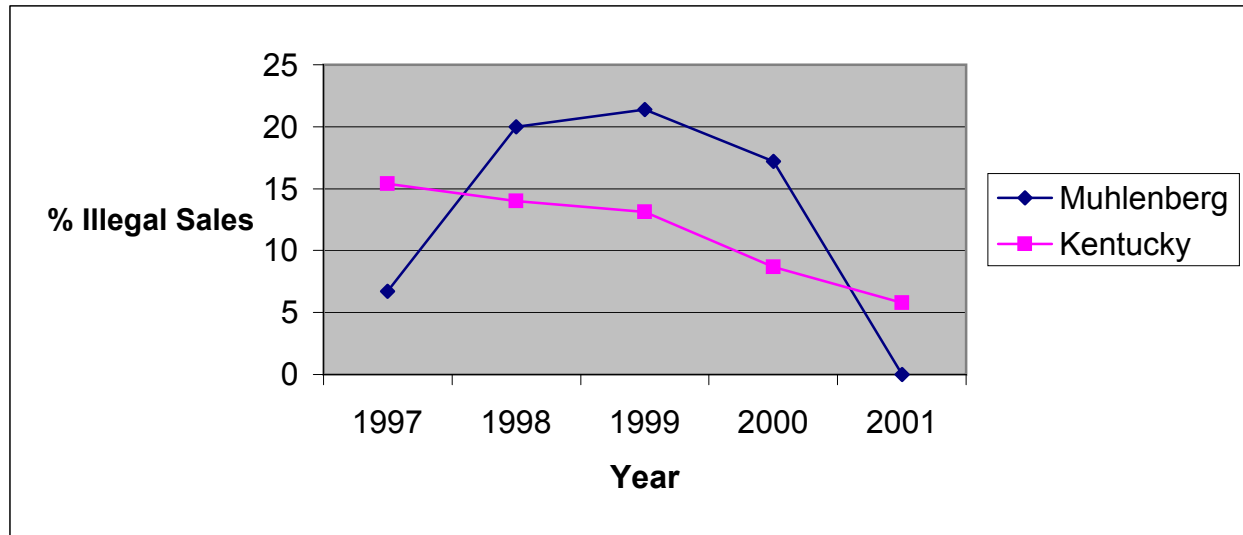


**Illegal Tobacco Sales to Minors
by Health Department Service Area and State
1997-2001**

Muhlenberg County Health Department

Service Area	1997			1998			1999			2000			2001		
	Attempts to Purchase	Illegal Sales	%	Attempts to Purchase	Illegal Sales	%	Attempts to Purchase	Illegal Sales	%	Attempts to Purchase	Illegal Sales	%	Attempts to Purchase	Illegal Sales	%
Muhlenberg	30	2	6.7	10	2	20.0	28	6	21.4	29	5	17.2	8	0	0.0
Kentucky	2061	318	15.4	2633	369	14.0	5853	768	13.1	3361	293	8.7	3446	199	5.8



Source: Alcoholic Beverage Control, Teen Tobacco Enforcement Program