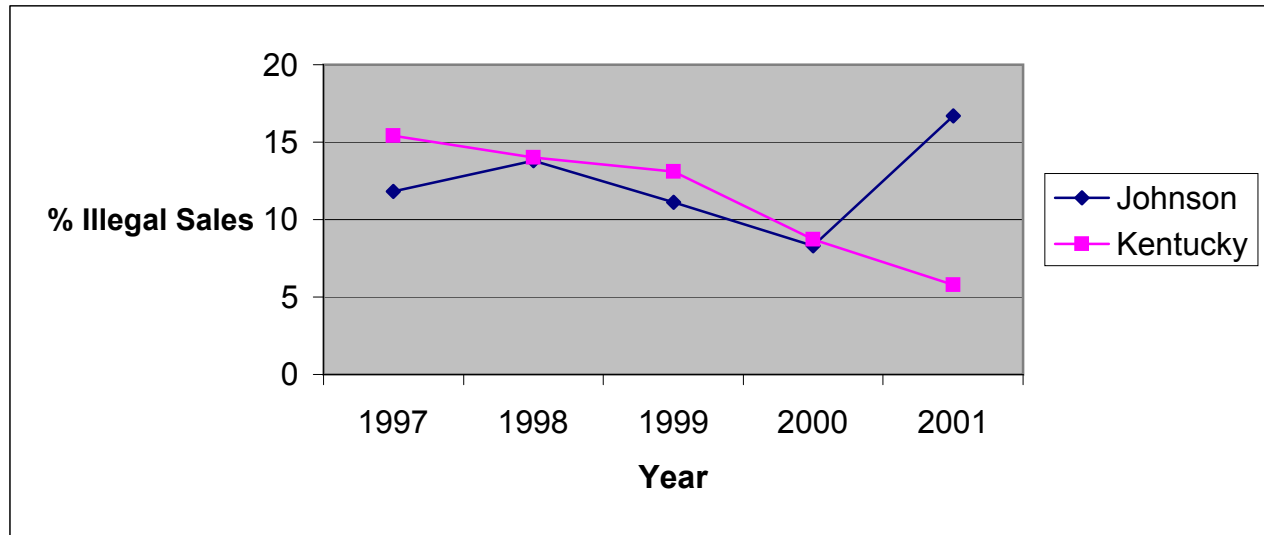


**Illegal Tobacco Sales to Minors
by Health Department Service Area and State
1997-2001**

Johnson County Health Department

Service Area	1997			1998			1999			2000			2001		
	Attempts to Purchase	Illegal Sales	%	Attempts to Purchase	Illegal Sales	%	Attempts to Purchase	Illegal Sales	%	Attempts to Purchase	Illegal Sales	%	Attempts to Purchase	Illegal Sales	%
Johnson	17	2	11.8	29	4	13.8	54	6	11.1	12	1	8.3	12	2	16.7
Kentucky	2061	318	15.4	2633	369	14.0	5853	768	13.1	3361	293	8.7	3446	199	5.8



Source: Alcoholic Beverage Control, Teen Tobacco Enforcement Program