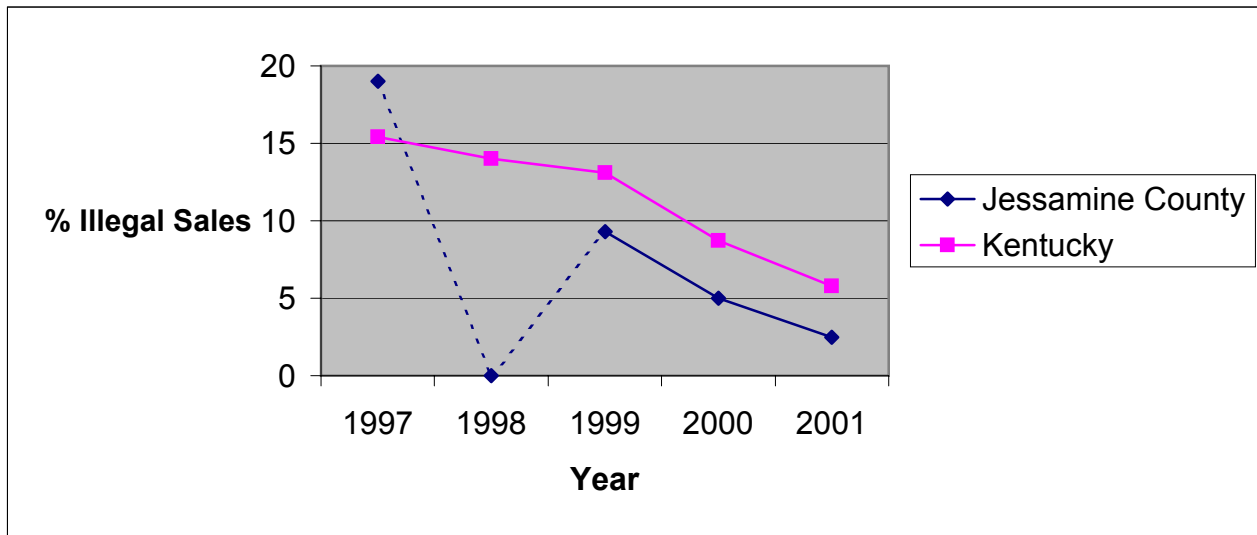


**Illegal Tobacco Sales to Minors
by Health Department Service Area and State
1997-2001**

Jessamine County Health Department

Service Area	1997			1998			1999			2000			2001		
	Attempts to Purchase	Illegal Sales	%	Attempts to Purchase	Illegal Sales	%	Attempts to Purchase	Illegal Sales	%	Attempts to Purchase	Illegal Sales	%	Attempts to Purchase	Illegal Sales	%
Jessamine	21	4	19.0	0	*	*	54	5	9.3	20	1	5.0	40	1	2.5
Kentucky	2061	318	15.4	2633	369	14.0	5853	768	13.1	3361	293	8.7	3446	199	5.8



* No data reported
----- = Missing Data

Source: Alcoholic Beverage Control, Teen Tobacco Enforcement Program