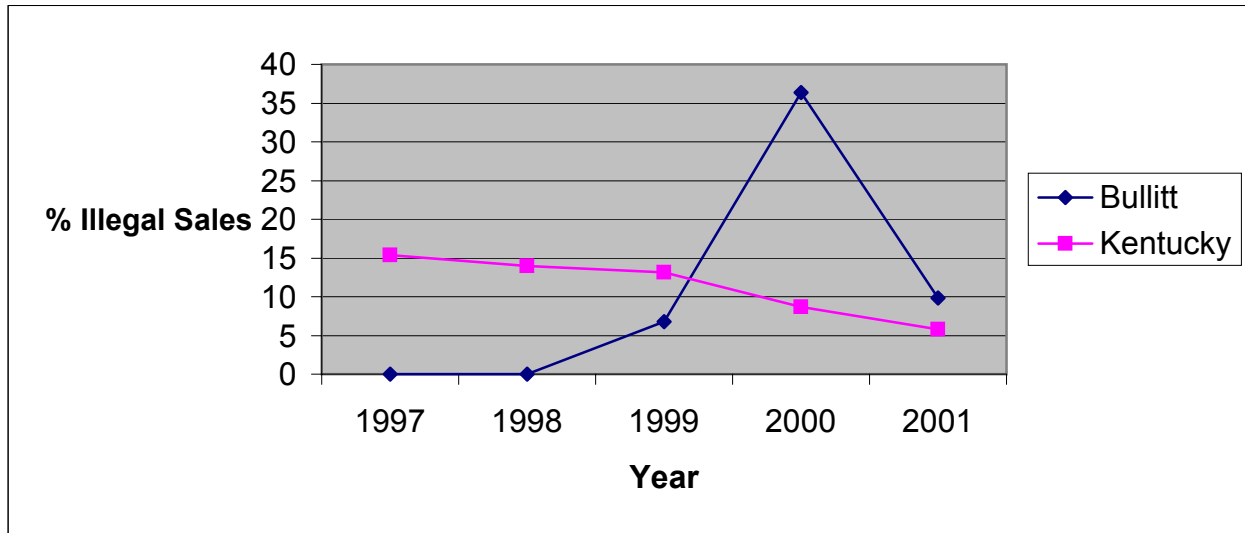


**Illegal Tobacco Sales to Minors
by Health Department Service Area and State
1997-2001**

Bullitt County Health Department

Service Area	1997			1998			1999			2000			2001		
	Attempts to Purchase	Illegal Sales	%	Attempts to Purchase	Illegal Sales	%	Attempts to Purchase	Illegal Sales	%	Attempts to Purchase	Illegal Sales	%	Attempts to Purchase	Illegal Sales	%
Bullitt	19	0	0.0	20	0	0.0	44	3	6.8	22	8	36.4	41	4	9.8
Kentucky	2061	318	15.4	2633	369	14.0	5853	768	13.1	3361	293	8.7	3446	199	5.8



Source: Alcoholic Beverage Control, Teen Tobacco Enforcement Program