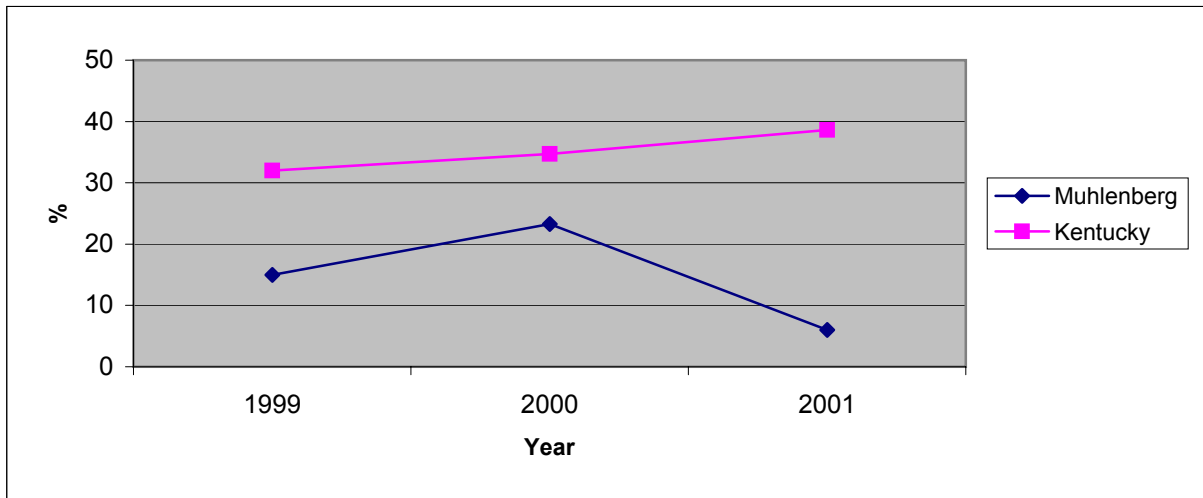


**Percent of Smoke-Free Food Service Establishments, 1999-2001
Muhlenberg County Health Department**

County	1999		2000		2001	
	<u>N</u>	%	<u>N</u>	%	<u>N</u>	%
Muhlenberg	55	15.0	60	23.3	50	6.0
Kentucky	5614	32.0	6309	34.7	6373	38.6



Healthy Kentuckians 2010: Prevention Initiative

Objective 3.17. Increase to 51 percent the proportion of food service establishments that prohibit smoking or limit it to separately ventilated areas (1999 Baseline: 32 percent).

Sources. Healthy Kentuckians 2010 Spring 2000

Kentucky Department for Public Health, Division of Environmental Health and Community Safety, 1999, 2000, 2001